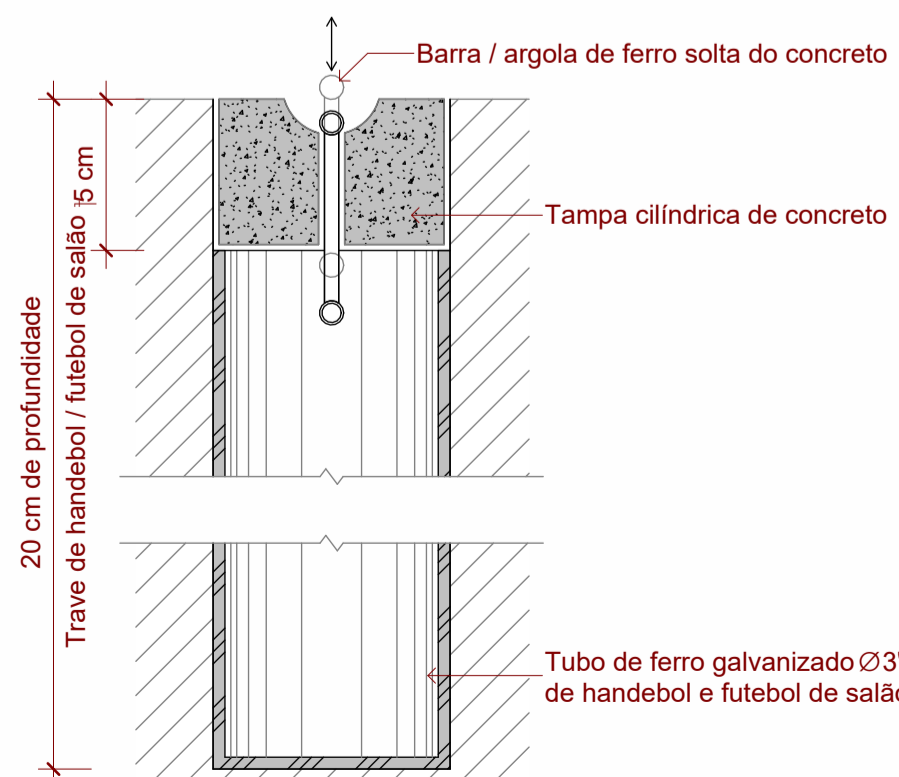
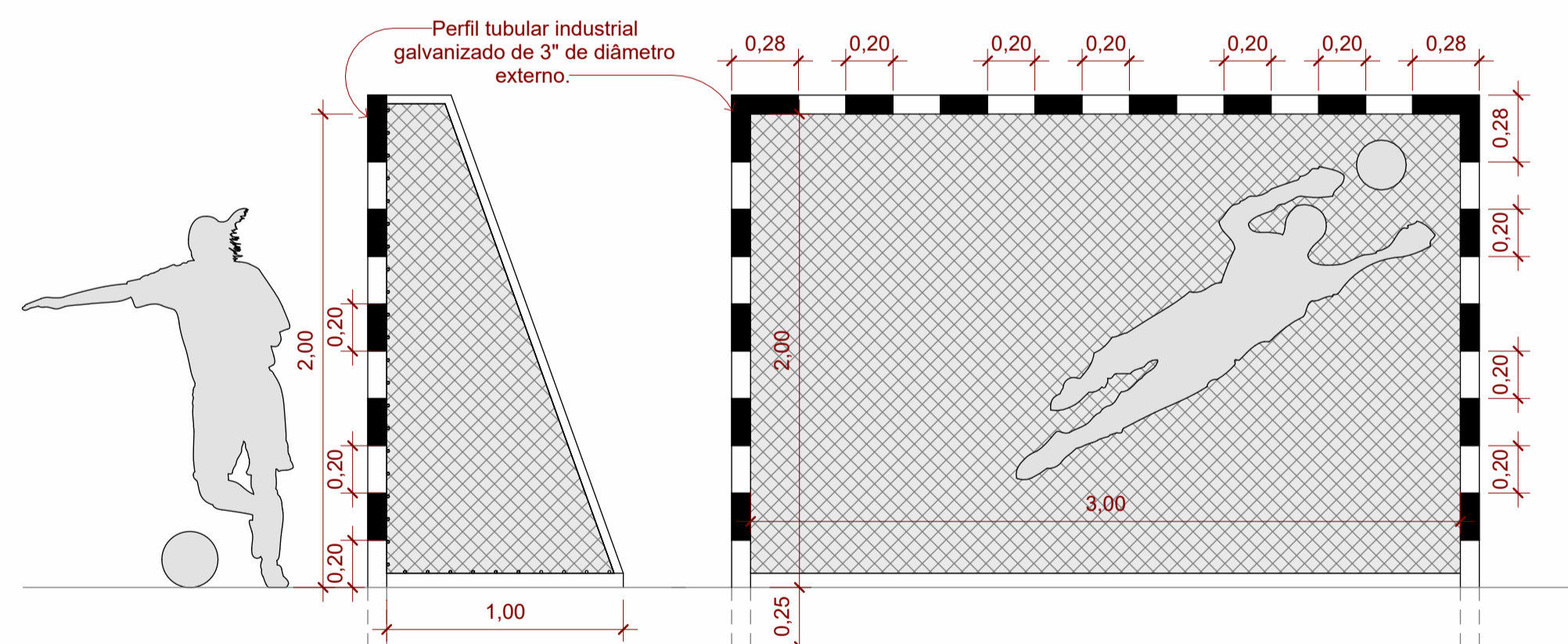
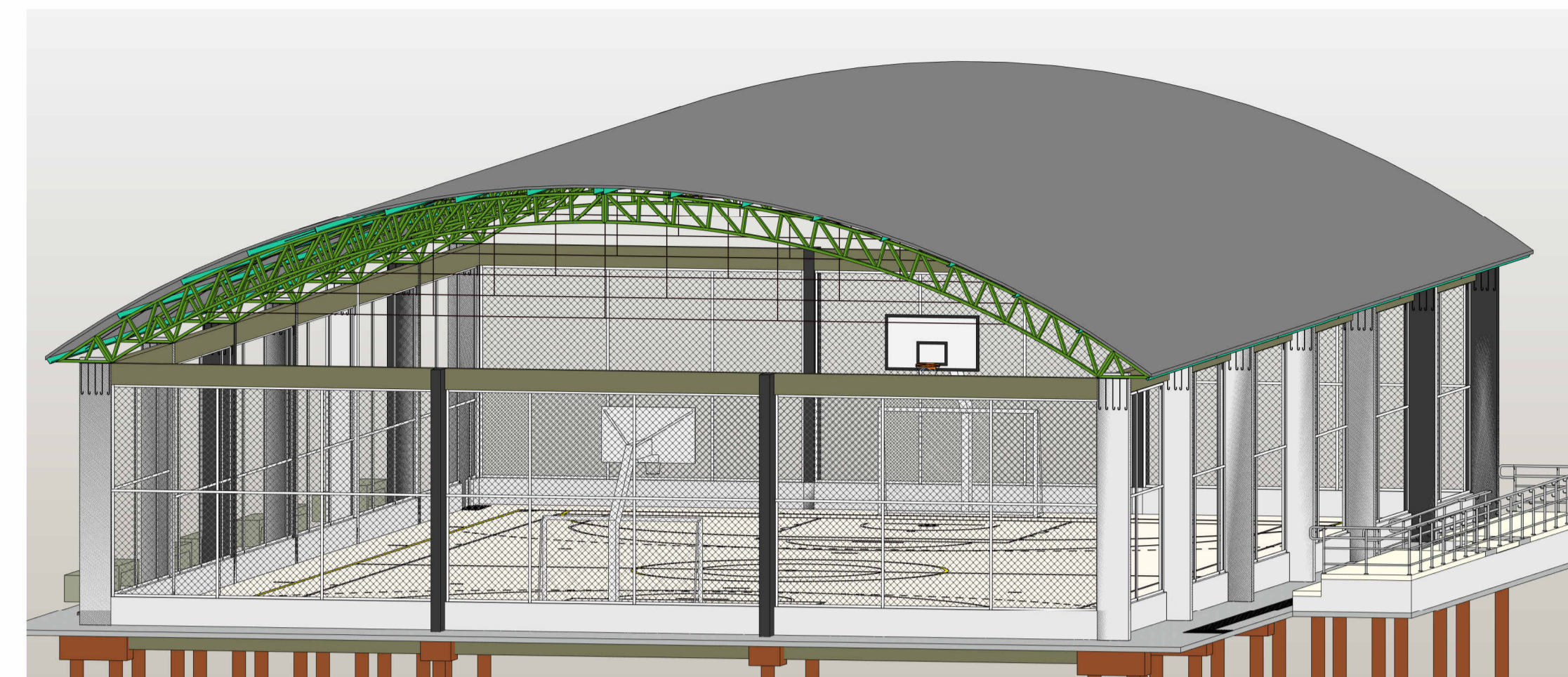


- ## 1 VÃO DAS PORTAS 1 : 25



- 2** VÃO DAS PORTAS



Technical drawing of a basketball hoop and backboard assembly, showing dimensions and labels in Portuguese.

Dimensions:

- Horizontal dimensions: 1,42, 3,46, 2,04
- Vertical dimensions: 1,13, 3,55, 2,42, 1,05, 2,90, 3,05
- Horizontal distance from the backboard to the free-throw line: 1,20
- Horizontal distance from the backboard to the three-point line: 2,10

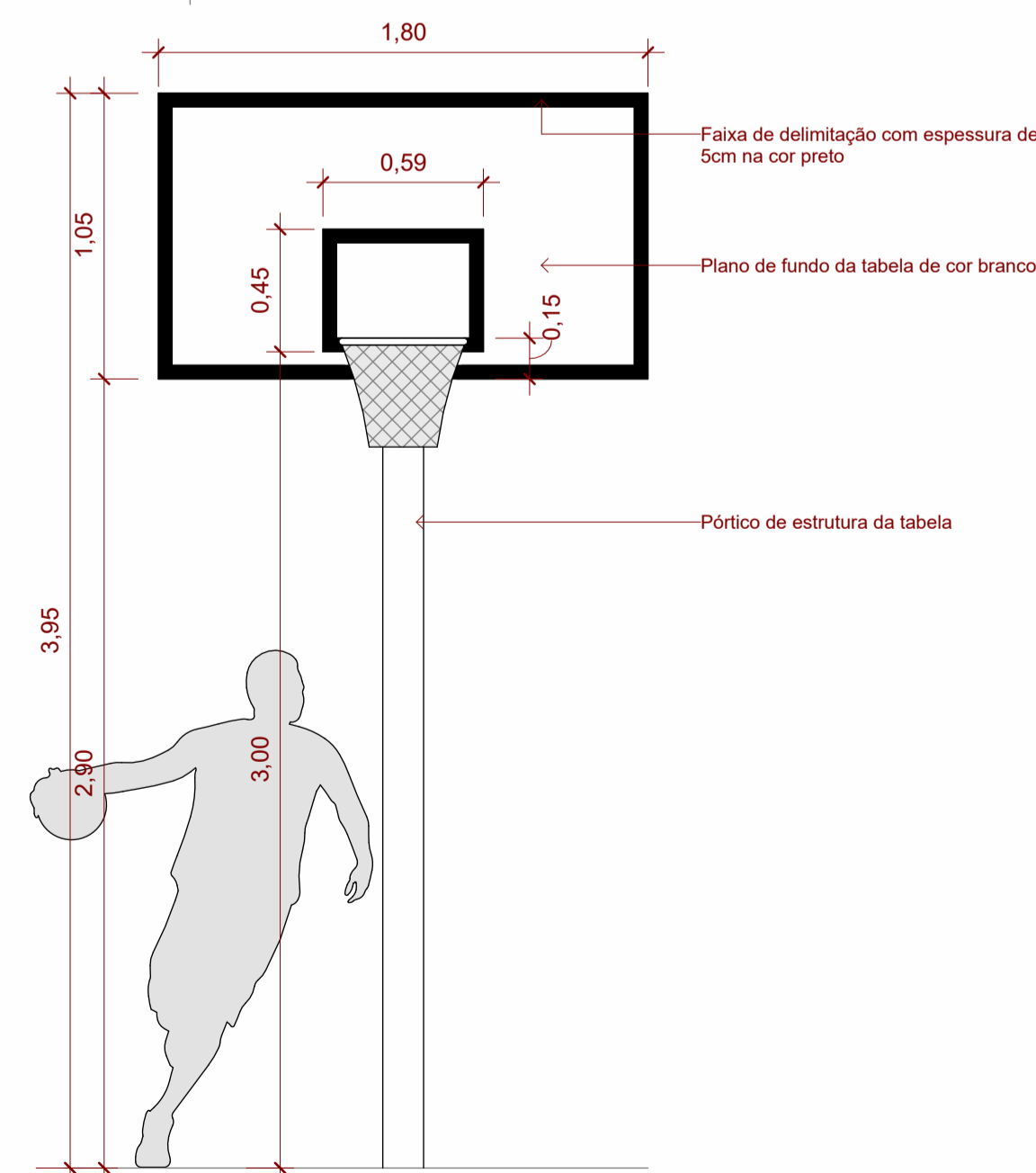
Angles:

- Angle between the backboard and the support arm: 126°
- Angle between the support arm and the horizontal: 144°



Labels:

- Pórtico de estrutura da tabela (Support structure of the backboard)
- Tabela de basquetebol (Basketball backboard)
- $\square \varnothing = 0,45$ (Backboard dimensions)
- Linha limite de jogo (Game line)
- Cota mínima permitida para a modalidade (Minimum allowed height for the sport)

Illustration: A silhouette of a basketball player is shown on the right side of the drawing.



3 VÃO DAS PORTAS

		Associação dos Municípios do Acre									
		Rua Isaura Parente, 2.931- Estação Experimental CEP 69.915-000 Telefax. (68) 2106 - 3800 E-mail: amac@amac.com.br									
MINISTÉRIO DA DEFESA PC N		CONVÊNIO 942470		ANO 2023		TIPO Arq.		FOLHA 6/6		MODIFICAÇÕES A B C D E F G H I	
Programa Calha Norte											
CONVENIENTE: Prefeitura municipal de Tarauacá				LOCAL DA OBRA: Comunidade Caucho, Zona Rural, Tarauacá - Ac							
OBRA: Construção de Quadra Poliesportiva Coberta no Município de Tarauacá/Ac				ÁREAS: Á. construir 867,36 m² Á. do lote 2.099,84 m²							
				CORTES E FACHADAS							
AUTOR: Roberto Viana Arquiteto e Urbanista Cau. A234229-4		DES: Yara Machado		DATA: 09/04/2024		F					
PREFEITO MUNICIPAL		COORDENADAS Longitude: 8°14'45.88"S Latitude: 70°45'13.82"W		DIM.: METRO		G					
V I S T O		AUTOR Ralson Lucas da Silva Viana		ESC.: INDICADA		H					